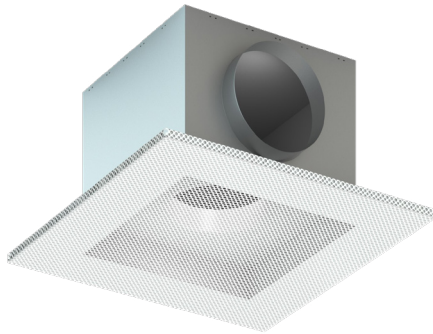


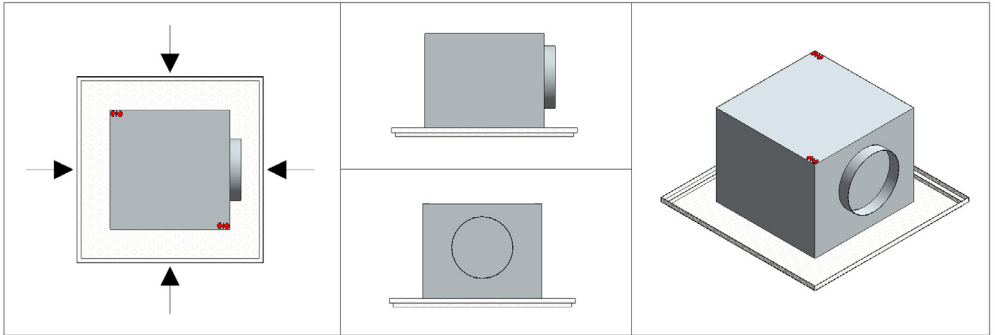


REVIT MANUAL
Ceiling diffuser
PRVMI | PRTMI



SUMMARISED REVIT BIM MANUAL SOLID AIR MODELS

SUMMARISED MANUAL REVIT BIM-MODELS SOLID AIR



Text		
SACS_Warning_Text_Other		
SACS_Warning_Text_Flow		Warnings when outcomes are outside the given threshold values.
SACS_Warning_Text_Ploss		
SACS_Warning_Text_Sound		
Materials and Finishes		
SACS_Color	RAL 9010	Used color.
SACS_Face_Color	RAL 9010 Perforated	Material color for model*.
SACS_Lining_Material	Armaflex	Internal insulation plenum.
SACS_Lining_Thickness	12.0	Insulation thickness.
Dimensions		
NLRS_M_c01_diameter	200.0	Nominal connection size.
SACS_Plenum_Height	315.0	Height of the plenum .
SACS_Face_Square	595.0	Square size ceiling plate .
Size	200 Ø	
Mechanical		
SACS_Max_Lp_dBA	28	Maximum permitted sound production.
SACS_Max_Ploss	35.000000 Pa	Maximum required pressure loss.
Mechanical - Flow		
NLRS_M_c01_debiet	200.0000 m³/h	Air flow.
NLRS_M_c01_drukverlies_statisch	2.500000 Pa	Pressure loss with volume.
SACS_Lp_DbA	0	Sound power level at airflow (room attenuation: 10 dB).

Identity Data	
NLRS_C_model	PRVMIOR 400
NLRS_C_materiaal_kleur	RAL 9010
SACS_Article_Code	8001000100
SACS_Gross_Cost	170.00
SACS_Price_Date	01-02-2022
Model Properties	
SACS_Option_1	PRVMI
SACS_Option_2	OR
SACS_Sunken_Face	<input type="checkbox"/>
SACS_Connector_Top	<input type="checkbox"/>
SACS_Lined_Plenum	<input checked="" type="checkbox"/>
SACS_Low_Plenum	<input type="checkbox"/>
SACS_Oval_Connector	<input type="checkbox"/>
SACS_Standard_Color	<input checked="" type="checkbox"/>
SACS_Color_Ral	<input checked="" type="checkbox"/>
SACS_Costum_Color	
Visibility	
SACS_Arrow_Enabled	<input checked="" type="checkbox"/>
SACS_Warning_Disabled	<input type="checkbox"/>

Article name selected diffuser.

Used diffuser color.

Order number**.

Gross price**.

Validity date price.

Flat or 13 mm dropped.

Plenum/connection version.

Select 13 dropped panel.

Select plenum with top connection.

Select insulated plenum.

Select dropped plenum.

Select plenum with oval connection.

Use default color (if checked).

Select different RAL color.

Use costum color.

Show arrows and throw.

Hide warning on model.

Notes

*If a different color is required for the diffuser, the view of the model can be given a different color.

** Capacity and throw depend on the room temperature and the supplied-air temperature

***Order numbers are only given when it concerns a product that was available in our ERP on the version date and that is a standard RAL 9010 version.

Possible configurations

Not every conceivable combination is possible for the plenum. The model will adjust to what is possible, and the corresponding option will be shown under the parameter "SACS_Option_2"

OA: Round top connection.

OU: Uninsulated plenum (not possible with round top connection).

OR: Insulated plenum (not possible with round top connection).

OU OV: Uninsulated plenum with oval connection (not possible with round top connection).

OR OV: Insulated plenum oval connection (not possible with round top connection).

OU VP: Uninsulated, dropped plenum (not possible with round top and oval connection).

OR VP: Insulated, dropped plenum (not possible with round top and oval connection).

When "SACS_Standard_Color" is on, the standard RAL 9010 diffusers will be used for the price and the order number.

When "SACS_Sandard_Color" is off and "SACS_Color_Ral" is on, the color in the parameter "SACS_Custom_Color" is used as the entered color. There is no order number for this, and the displayed price is for using a non-standard RAL color (i.e. not RAL 9010).

When "SACS_Sandard_Color" is off and "SACS_Color_Ral" is off, the color in the parameter "SACS_Custom_Color" is used as the entered color. There is no order number for this, and the displayed price is for using a non RAL color.

NB: a color-change surcharge applies per delivery and per color for using non-standard colors!



Solid Air International
A. PO Box 14, 9610 AA Sappemeer
T. +31 598 36 12 21
E. contact@solid-air.com
W. www.solid-air.com